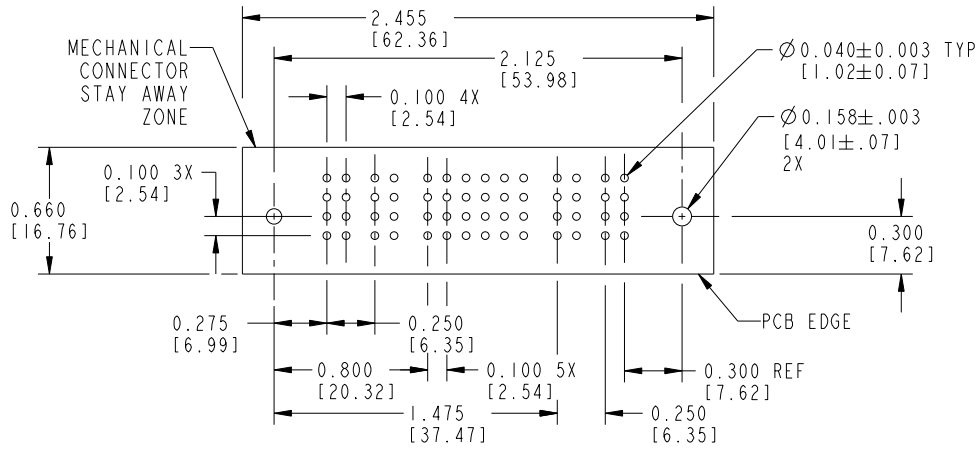
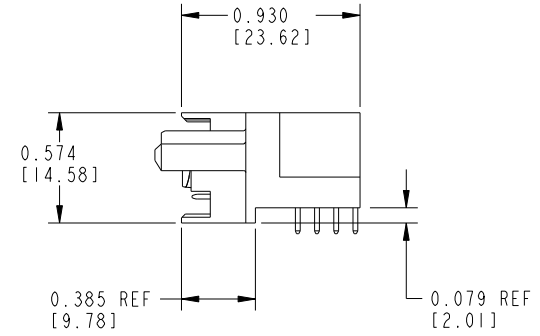
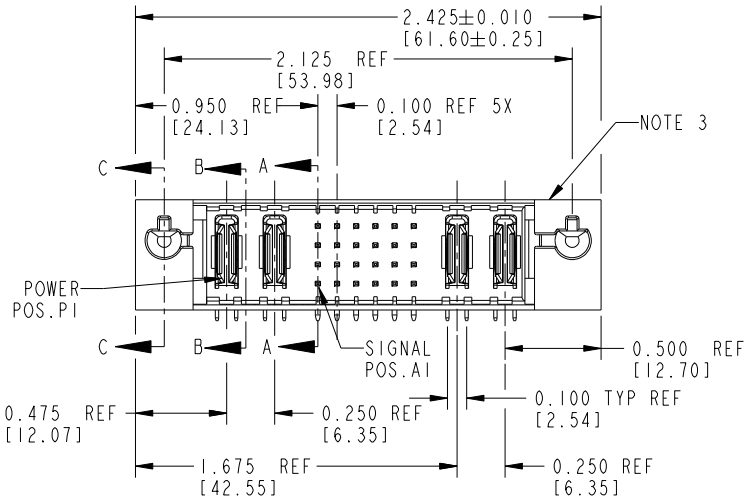


Tous droits strictement réservés. Reproduction ou communication a des tiers interdite sous quelque forme que ce soit sans autorisation écrite du propriétaire. Propriété de c FCI. Droits de reproduction FCI.

All rights strictly reserved. Reproduction or issue to third parties in any form whatever is not permitted without written authority from the proprietor. Property of FCI. Copyright FCI.



PRODUCT NUMBER  
51534-XXYYY--  
NOTE: (2)  
SEE SHEET 3



RECOMMENDED PCB LAYOUT

mat'l code				NOTE 1		tolerances unless otherwise specified		CUSTOMER		FCI	
lir	ecn no.	dr	date	linear	.XX±.01/.X±.3	COPY		projection		www.fciconnect.com	
H	DG06-0011	CS	01/09/06	angles	.XXX±.005/.XX±.13	INCH/MM		title		2P + 24S + 2P	
J	DG08-0266	WD	09/21/08		.XXX±.0020/.X±.051	scale		RIGHT ANGLE SOLDER HEADER		product family	
				dr	D. WOLFORD	1:1		PWRBLADE		code	
				enrg	J. BROWN			size		213	
				chr	J. BROWN			dwg no		sheet	
				appd	J. BROWN			A		1 of 3	
sheet index		revision sheet		J	J			51534			
				1	2						
				3							

Pro/E

PDM: Rev:3

STATUS: Released

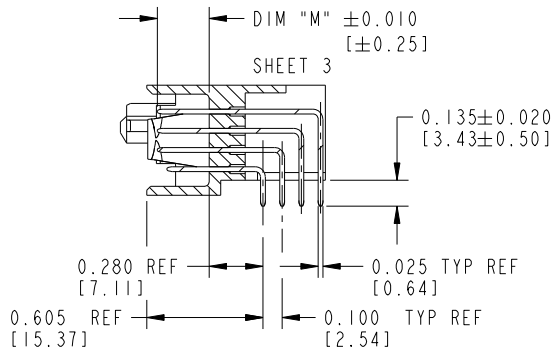
Printed: Sep 26, 2008

Tous droits strictement réservés. Reproduction ou communication a des tiers interdite sous quelque forme que ce soit sans autorisation écrite du propriétaire. Propriété de c FCI. Droits de reproduction FCI.

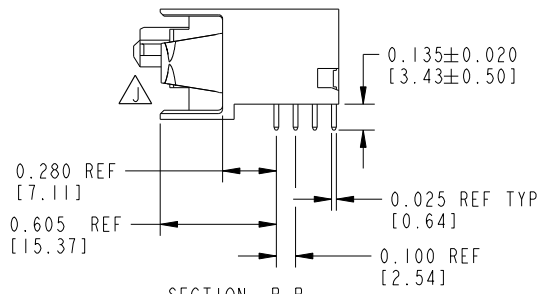
All rights strictly reserved. Reproduction or issue to third parties in any form whatever is not permitted without written authority from the proprietor. Property of FCI. Copyright FCI.



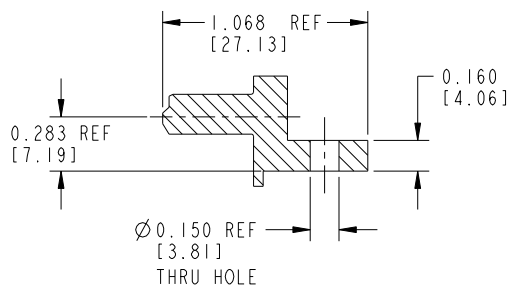
PRODUCT NUMBER  
51534-XXYYY--  
NOTE: (2)  
SEE SHEET 3



SECTION A-A



SECTION B-B



SECTION C-C

mat'l code		NOTE 1		tolerances unless otherwise specified		CUSTOMER		FCI	
lfr	ecn no.	dr	date	linear	.XX±.01/.X±.3	COPY		www.fciconnect.com	
J				projection	.XXX±.005/.XX±.13	projection		title	
				angles	.XXX±.0020/.X±.051	INCH/MM		2P + 24S + 2P RIGHT ANGLE SOLDER HEADER	
				dr	0°±2°	INCH/MM		product family	
				enrg	D. WOLFORD 10/14/98	scale		PWRBLADE	
				chr	J. BROWN 10/14/98	1:1		code	
				appd	J. BROWN 10/14/98	A		213	
sheet index		revision sheet				size		sheet	
						A		2	
						51534			

Tous droits strictement réservés. Reproduction ou communication a des tiers interdite sous quelque forme que ce soit sans autorisation écrite du propriétaire. Propriété de c FCI. Droits de reproduction FCI.



All rights strictly reserved. Reproduction or issue to third parties in any form whatever is not permitted without written authority from the proprietor. Property of FCI. Copyright FCI.

1 | 2

3

4

PRODUCT No.	ROWS	POWER		SIGNAL						POWER		E2	
		E1	P1	P2	1	2	3	4	5	6	P3		P4
51534-XX001-- NOTE: ②	D C B A		PA	PA	UUUUUU	TTTTTT	SSSSSS	RRRRRR	UUUUUU	TTTTTT	SSSSSS	RRRRRR	

PRODUCT No.	ROWS	POWER		SIGNAL						POWER		E2	
		E1	P1	P2	1	2	3	4	5	6	P3		P4
51534-XX002-- NOTE: ②	D C B A		PA	PA	UUUUUU	TTTTTT	SSSSSS	RRRRRR	UUUUUU	TTTTTT	SSSSSS	RRRRRR	

PCB NOTES:

- ALL DIMENSIONS ARE BASIC UNLESS OTHERWISE SPECIFIED.
- ALL THROUGH HOLES ARE LOCATED WITH A TRUE POSITION OF 0.004[0.10]
- ALL HOLE DIAMETERS ARE FINISHED HOLE SIZE
- Ø0.158 [4.01] THROUGH HOLES ARE UNPLATED
- Ø0.0453±0.0010[1.151±0.025] DRILLED HOLES PLATED WITH 0.0003[0.008] MIN SnPb OVER 0.001[0.03] to 0.003[0.08] Cu PLATING TO ACHIEVE A 0.040±0.003[1.02±0.07] HOLE
- ▲SYMBOL WILL BE NEXT TO ANY DIMENSION, VIEW, OR NOTE WHICH HAS BEEN MODIFIED WITH THE CURRENT DRAWING REVISION.

CONNECTOR NOTES:

- HOUSING MATERIAL: UL94 V-0 GLASS FILLED HIGH TEMP. THERMOPLASTIC.  
SIGNAL PIN MATERIAL: COPPER ALLOY.  
POWER CONTACT MATERIAL: COPPER ALLOY.
- MANUFACTURER'S NAME, P/N, AND DATE CODE TO APPEAR ON THIS SURFACE.
- ▲3. SEE ITEM 1 & 2 IN PRINT 10064183 FOR PLATING SPEC OF 51534-XX00X AND 51534-XX00XLF RESPECTIVELY.
- PRODUCT SPECIFICATION GS-12-149.

ITEM NO.	DIM "M" ±0.010 [0.25]		CONTACT TYPE
E	0.220	[5.59]	SIGNAL
F	0.220	[5.59]	SIGNAL
R	0.270	[6.86]	SIGNAL
S	0.270	[6.86]	SIGNAL
T	0.270	[6.86]	SIGNAL
U	0.270	[6.86]	SIGNAL
PA	N/A	[N/A]	POWER

mat'l code		NOTE 1		tolerances unless otherwise specified		CUSTOMER		FCI	
ltr	ecn no.	dr	date	linear	.XX±.01/.X±.3	COPY		www.fciconnect.com	
J				angles	.XXX±.005/.XX±.13 .XXX±.0020/.X±.051 0°±2°	projection		title	
				dr	D. WOLFORD 10/14/98	INCH/MM		product family	
				enrg	J. BROWN 10/14/98	scale		PWRBLADE	
				chr	J. BROWN 10/14/98	1:1		code	
				appd	J. BROWN 10/14/98	A		213	
sheet index	revision sheet							51534	
								3	

1 | 2

3

4

Pro/E

PDM: Rev:3

STATUS: Released

Printed: Sep 26, 2008